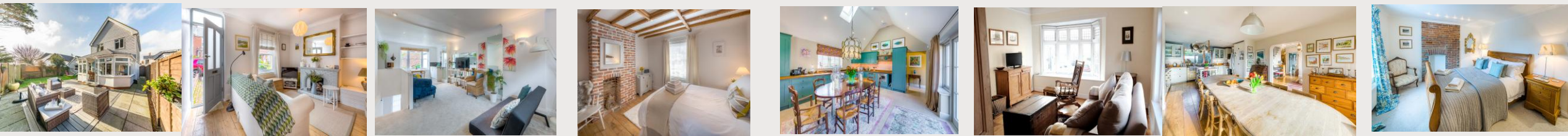




# LAURA LYE HOLIDAY LETS

**What makes a great holiday? For me, the perfect ingredients are a wonderful place to stay, great company, having time to relax, delicious food, a few treats and fun excursions.**

**To help you find the perfect balance I have put together a few ideas of things to make your holiday extra special!**



# LOCAL TOWNS

- Visit the Cowdray Heritage Ruins at Midhurst: [www.cowdray.co.uk/historic-cowdray/](http://www.cowdray.co.uk/historic-cowdray/)
- Petworth is an old town after a walk in Petworth Park with lots of cafes and antique shops <https://discoverpetworth.uk/discover/>
- Petersfield <https://visitpetersfield.co.uk/> as a lively market town with a lake ( and row boats in the summer), playground for younger children and cafe.
- Midhurst <https://visitmidhurst.com/> is a charming West Sussex town with thriving farmers market and Norman castle ruins.



# ARUNDEL TOWN



- Arundel itself is dominated by the magnificent Arundel Castle (open from April to October) with its beautifully preserved tapestries, armour and art collections. There are inspiring gardens, exciting jousting displays and historical festivals. Tours of the castle are available [www.arundelcastle.org](http://www.arundelcastle.org) There is an interesting museum opposite the main gates of the castle [www.arundelmuseum.org](http://www.arundelmuseum.org)
- Visit the imposing Arundel Cathedral [www.arundelcathedral.org](http://www.arundelcathedral.org)
- There are magnificent walks and views across the South Downs countryside from Arundel Park. Walk down the hill in the park and you will come to Swanbourne Lake where you can hire a boat to go rowing [www.swanbournelodgetearoom.co.uk/summer-boats](http://www.swanbournelodgetearoom.co.uk/summer-boats) A little further on is the Arundel Wetlands Centre – home to a collection of over 50 species of wildfowl from around the world in a natural setting [www.wwt.org.uk](http://www.wwt.org.uk)
- If you enjoy a family activity Arundel Lido has swimming and aqua aerobics [www.arundel-lido.com](http://www.arundel-lido.com). Horse riding lessons are available on New Road, Arundel <http://www.arundelridingcentre.co.uk> or just past the castle main gate is a mini golf centre, cafe and public tennis courts [www.arundelputtinggreenandcafe.co.uk](http://www.arundelputtinggreenandcafe.co.uk)
- If you are a larger group what about going to the old Arundel Jailhouse for a murder mystery evening? [www.arundeljailhouse.co.uk/murder-mystery-evening](http://www.arundeljailhouse.co.uk/murder-mystery-evening)
- One of the highlights of Arundel's calendar is The Arundel Festival held in August: a joyful celebration of music, theatre, culture, food and drink. There is a delightful art trail held in private homes and public spaces across Arundel and the local area [www.arundelfestival.co.uk](http://www.arundelfestival.co.uk). Arundel also host another great festival in the winter 'Arundel at Christmas' is the perfect way to kick start your Christmas celebrations!

# BEACHES AND WATERSPORTS

- West Beach: located past Littlehampton Links golf course at the end of Rope Walk. There is a great fish and chip shack on the beach called West Beach Café (open summer months only [www.facebook.com/westbeachcafe1/](http://www.facebook.com/westbeachcafe1/)) and the beach is just a little further along.
- Climping Beach: The beach is mostly stone but reveals a little sand at low tide with good rock pooling areas. There is a huge grassed area behind the beach perfect for family cricket or rounders and a no frills café for a cuppa.
- Felpham Beach: A great promenade which stretches from Middleton to Bognor Regis: a fun and easy stretch of the coast for for prams, bikes and wheelchair users to negotiate. There is an excellent eat in café and ice cream shop called the Lobster Pot [The Lobster Pot | West Sussex Coast](#)
- West Wittering Beach: The most famous beach in the area. It is sandy and very, very long with pathways through the dunes. Beware that the traffic can be heavy during peak season. If you are interested in learning how to surf, windsurf, kitesurf or sup board book ahead at [www.2xs.co.uk](http://www.2xs.co.uk)
- Chichester Watersports offer windsurfing, wakeboarding, waterskiing, kayaking, ringo rides and ten-man banana boat rides [www.chichesterwatersports.co.uk](http://www.chichesterwatersports.co.uk)



# FAMILY DAYS OUT

- The Weald & Downland Outdoor Museum in Singleton has rebuilt historic houses and buildings from 13<sup>th</sup> Century to Victorian times which is interesting and charming for all ages [www.wealddown.co.uk](http://www.wealddown.co.uk) The Repair Shop is filmed here! Heritage Tours offer trips on their solar powered catamaran for a tour around Chichester Harbour. The captain will take you out to see the seals and help you identify the birds in the area. He will also point out the local celebrity owned properties along the coast! Book in advance
- You can charter a boat with Heritage Tours <https://chichesterharbourcharters.co.uk> The captain will take you out to see the seals and help you identify the birds in the area. He will also point out the local celebrity owned properties along the coast!
- Portsmouth is home to the Royal Dockyard where you can see both the Mary Rose ship and the Victory [www.historicdockyard.co.uk](http://www.historicdockyard.co.uk). Also check out Lazer Quest and the designer outlet shopping centre: Gunwharf Quays [www.gunwharf-quays.com](http://www.gunwharf-quays.com)
- Trampoline park Flip Out in Chichester is a favourite with the kids on a rainy day [www.flipout.co.uk/locations/chichester](http://www.flipout.co.uk/locations/chichester) or there is a fantastic activity centre called Out of Bounds (just outside Littlehampton) which has bowling alleys, an indoor climbing center, adventure golf, jumping pillows and lazer tag. Book ahead. [www.out-of-bounds.co.uk](http://www.out-of-bounds.co.uk)
- Aldingbourne country club is perfect for younger children – feed the alpacas, stroke the guinea pigs and interact with the donkeys, ponies, pigs, goats, and peacocks! There is a maze, a woodland walk area, a miniature tractor riding area and a great café and shop. [www.aldingbournetrust.org/farm](http://www.aldingbournetrust.org/farm)



# FAMILY DAYS OUT

- Explore the river Arun from by boat. Motor dinghies taking up 6 or 8 people can be hired at Houghton Bridge, Amberley. Novices are welcome: a short tutorial is provided. Bikes and e-bikes can also be hired from here together with on and off-road route plans [www.riversidesouthdowns.com](http://www.riversidesouthdowns.com)
- Amberley Museum and Heritage Centre is dedicated to the industrial heritage of the South East. This outdoor museum is a hotch potch of different activities and exhibits including a narrow gauge railway and a print works. Admire the collection of historic buses and communication displays. Have a go at rural crafts in one of the workshops. It is fantastic fun for all ages [www.amberleymuseum.co.uk](http://www.amberleymuseum.co.uk)
- Hotham Park, Bognor Regis has an Alice in Wonderland trail, mini train, kids playground, mini golf, boating lake and picturesque walks [www.hothampark.co.uk](http://www.hothampark.co.uk). This park is next door to Butlins [www.butlins.com/resorts/bognor-regis](http://www.butlins.com/resorts/bognor-regis)
- There is an 18 hole championship golf course at Goodwood [www.goodwood.com](http://www.goodwood.com), a driving range at Rustington <https://rgcgolf.com/driving-range> and Links course in Littlehampton [www.littlehamptongolf.co.uk](http://www.littlehamptongolf.co.uk)



# A SPOT OF CULTURE

- There are many incredible National Trust houses in the area: Petworth House is set in magnificent Capability Brown designed parkland teeming with deer. [www.nationaltrust.org.uk/visit/sussex/Petworth](http://www.nationaltrust.org.uk/visit/sussex/Petworth). Uppark House is located on the South Downs [www.nationaltrust.org.uk/visit/sussex/uppark-house-and-garden](http://www.nationaltrust.org.uk/visit/sussex/uppark-house-and-garden). Parham House is close to Pulborough: this is an Elizabethan House with wonderful gardens [www.parhaminsussex.co.uk](http://www.parhaminsussex.co.uk) to name a few.
- Chichester has a thriving theatre: famous actors frequently head the cast and a number of West End plays are shown at Chichester Festival Theatre before they debut in the West End [www.cft.org.uk](http://www.cft.org.uk). Book early! Also a must-see in Chichester is the magnificent Cathedral [www.chichestercathedral.org.uk](http://www.chichestercathedral.org.uk)
- Roman villas can be found both at Bignor [www.bignorromanvilla.co.uk](http://www.bignorromanvilla.co.uk) and Fishbourne Royal Palace [www.sussexpast.co.uk](http://www.sussexpast.co.uk). Both sites have incredible preserved mosaic floors.
- Pallant House Gallery, Chichester houses one of the best collections of 20th-century British art in the world <https://pallant.org.uk>. For art lovers, Newlands House, Petworth is another interesting gallery for modern art and photography <https://newlandshouse.gallery>. The town also has excellent antique shops.
- West Sussex is thought to be the sunniest county in the UK and it is fast becoming a centre of fine wine production. To delight in the joys of wine tours and tasting visit the Tinwood Estate, Chichester [www.tinwoodestate.com](http://www.tinwoodestate.com) or Bolney Wine Estate in Haywards Heath <https://bolneywineestate.com>



# GOODWOOD



- **Festival of Speed** - July brings this celebration of the automobile, featuring a wide range of cars, motorcycles and other vehicles from various eras [www.goodwood.com/motorsport/festival-of-speed](http://www.goodwood.com/motorsport/festival-of-speed). World-renowned racers and iconic road and racing machines are displayed and race at this unmissable event in the motorsport and automotive calendar.
- **Goodwood Revival** – This festival takes place in September and includes Grand Prix cars from the 1950s and 1960s, sports and GT cars, as well as historic saloon cars and little-seen Formula Juniors. Many of these important historic racing cars are driven by famous names from motor sport past and present. Many guests dress up in vintage outfits adding style and glamour to this fabulous event. [www.goodwood.com/motorsport/goodwood-revival](http://www.goodwood.com/motorsport/goodwood-revival)
- **Horse racing:** Goodwood is considered to be one of the most beautiful racecourses in the World! There are racing meets from May to October but the most famous is **Glorious Goodwood** [www.goodwood.com/horseracing/qatar-goodwood-festival](http://www.goodwood.com/horseracing/qatar-goodwood-festival)
- **Goodwoof** World-class competitions from top canine athletes; wellness workshops; talks from key behavioural and veterinary experts and free-of-charge activities for you and your dog! [www.goodwood.com/goodwoof](http://www.goodwood.com/goodwoof)

# HIKING AND BIKING IN BEAUTIFUL WEST SUSSEX

There are many beautiful walks in the area, whether it be the serious business of tackling sections of the South Downs Way [www.southdowns.gov.uk](http://www.southdowns.gov.uk)

Harting Hill and Beacon and Butser Hills are the highest points in the area. Halnaker is great to take a picnic to the windmill and watch the planes take off at Goodwood.

Hidden walker's pub in the Downs for a circular walk: the Royal Oak, Hooksway [www.royaloakhooksway.co.uk/](http://www.royaloakhooksway.co.uk/)

Southern e-bike Rentals [www.southernebikerentals.co.uk/](http://www.southernebikerentals.co.uk/) is at the Queen Elizabeth Country Park at Petersfield with bike trails as well as the Centurion and Salterns Way.



# OUR FAVOURITE RESTAURANTS AND CAFES IN THE AREA

- **The Spread Eagle, Midhurst** – Up market pub and spa <https://www.hshotels.co.uk/spread-eagle>
- **The Three Horseshoes, Elsted** – Old fashioned pub with garden and wonderful food <https://www.3hs.co.uk>
- **Fratelli, Midhurst** – Local pizzeria the kids will love! <https://fratelli-midhurst.co.uk>
- **The Pig in the South Downs, Madehurst** – The most fashionable hotel in the area opens it's doors to non-residents <https://www.thepighotel.com/in-the-south-downs>
- **The George, Burpham** – Beautiful and welcoming pub with good food and ale <https://georgeatburpham.co.uk>
- **The Barn, Chichester** – Unusual venue serving delicious, locally sourced produce (daytime only) [www.thebarnlittlelondon.com](http://www.thebarnlittlelondon.com)
- **Horse and Groom, East Ashling** <https://thehorseandgroom.pub> Good food and locally sourced produce. Great for Sunday lunch year round – lovely garden in the summer.
- **The Parsons Table, Arundel** – Fine dining for special occasions in Tarrant Street [www.theparsonstable.co.uk](http://www.theparsonstable.co.uk)
- **The Ivy, Chichester Brasserie** <https://ivycollection.com> Great bar area and cocktails – zany decoration and ok food. Buzzy and fun
- **Fox Goes Free** - A great gastro pub in Charlton: this is a quintessential English pub with a pretty garden [www.thefoxgoesfree.com](http://www.thefoxgoesfree.com)

# PUBS, CAFES AND RESTAURANTS NEAR THE SEA

- **The Lobster Pot, Felpham** - All-day eatery serving daytime light bites and ice cream - right on the beach!
- **The Crown and Anchor, Dell Quay** - With fabulous outside seating overlooking Chichester Harbour there is nowhere nicer to enjoy a delicious lunch on a sunny day. The pub itself is very cosy inside too! [www.crownandanchorchichester.com](http://www.crownandanchorchichester.com)
- **The Anchor Bleu, Bosham** - family run harbourside pub in the historic and picturesque heart of Bosham [www.anchorbleu.co.uk](http://www.anchorbleu.co.uk)
- **East Beach Café, Littlehampton** – Design Award winning restaurant on the seafront, Littlehampton. It's a restaurant with an emphasis on fresh fish and there is indoor and outside seating right on the beach. [www.eastbeachcafe.co.uk](http://www.eastbeachcafe.co.uk)
- **The West Beach Café** is a stylish fish and chip shack almost on the sea [West Beach Café, Littlehampton - Restaurant menu, prices and reviews](http://www.westbeachcafe.co.uk)
- **The Crab and Lobster, Sidlesham** – the menu is sourced from local producers; Selsey fishermen & neighbouring dairy farmers. [Bar & Restaurant - Crab & Lobster, Sidlesham, West Sussex](http://www.crabandlobster.co.uk)
- **The Ship Inn, Havant** [www.shiplangstone.co.uk](http://www.shiplangstone.co.uk)
- **The Quarterdeck Café** - Situated with easy access to the coastal footpath, offering beautiful walks around Chichester Harbour to West and East Wittering beaches, Serving hand-crafted coffee, delicious cakes, light breakfasts, lunches and snacks (also fully licensed, with a great selection of craft beer and wine). <https://www.quarterdeckcafe.co.uk>





## **LAURA LYE HOLIDAY LETS**

[www.lauralye.com](http://www.lauralye.com)

07974 740980